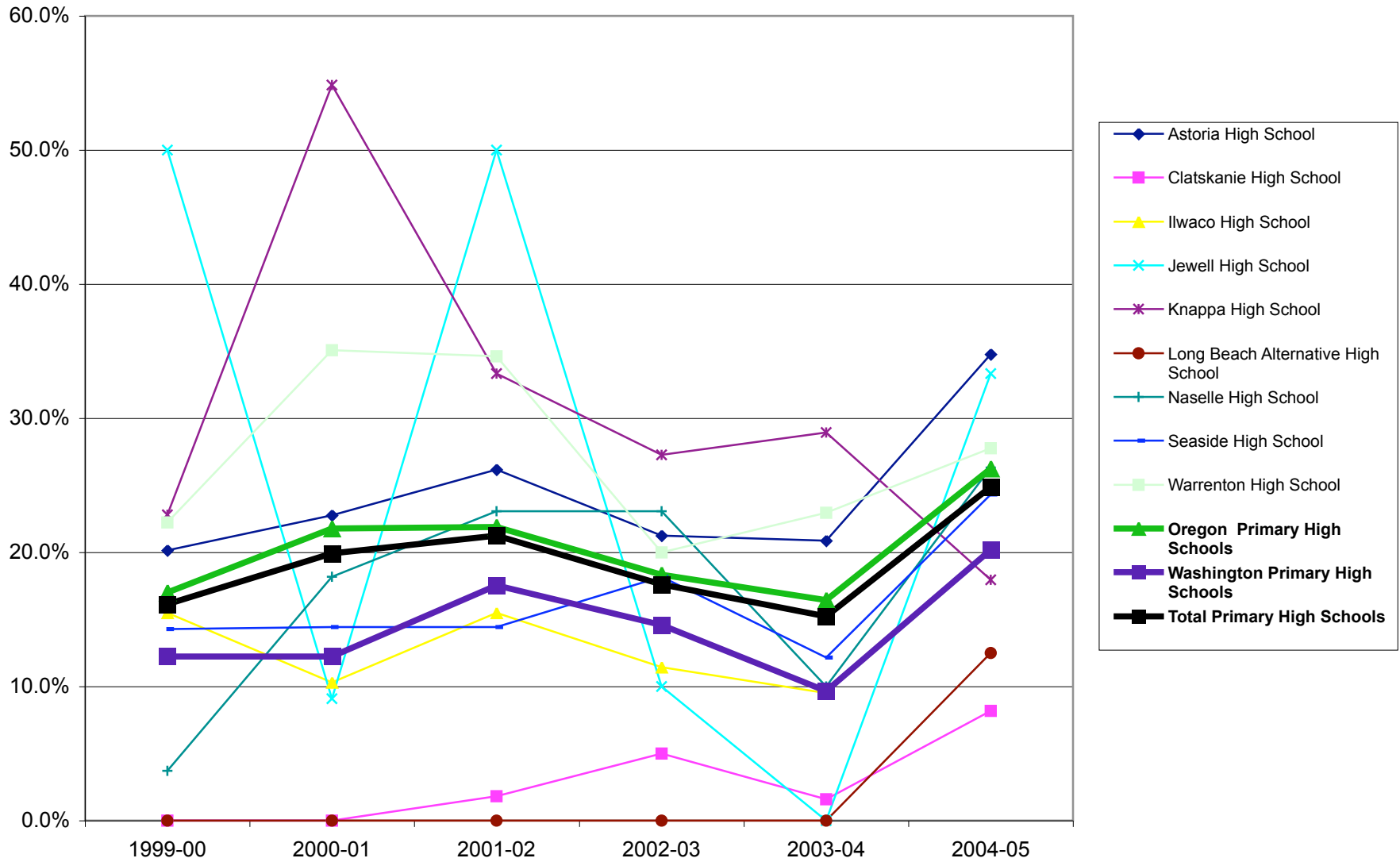


Area High School Penetration Rates



**Clatsop Community College
High School Recruiting Report 1999-2005**

	Total 1999-2000			Total 2000-2001			Total 2001-2002			Total 2002-2003			Total 2003-2004			Total 2004-2005 to date			
	High School Graduates	HS Grads Enrolled at Clatsop	Percent of HS Graduates at Clatsop	High School Graduates	HS Grads Enrolled at Clatsop	Percent of HS Graduates at Clatsop	High School Graduates	HS Grads Enrolled at Clatsop	Percent of HS Graduates at Clatsop	High School Graduates	HS Grads Enrolled at Clatsop	Percent of HS Graduates at Clatsop	High School Graduates	HS Grads Enrolled at Clatsop	Percent of HS Graduates at Clatsop	High School Graduates	HS Grads Enrolled at Clatsop	Percent of HS Graduates at Clatsop	
Primary High Schools																			
Astoria High School	129	26	20.2%	123	28	22.8%	126	33	26.2%	146	31	21.2%	139	29	20.9%	138	48	34.8%	
Clatskanie High School	62	0	0.0%	52	0	0.0%	55	1	1.8%	60	3	5.0%	63	1	1.6%	49	4	8.2%	
Ilwaco High School	71	11	15.5%	68	7	10.3%	71	11	15.5%	70	8	11.4%	63	6	9.5%	79	16	20.3%	
Jewell High School	6	3	50.0%	11	1	9.1%	8	4	50.0%	10	1	10.0%	9	0	0.0%	12	4	33.3%	
Knappa High School	57	13	22.8%	31	17	54.8%	42	14	33.3%	44	12	27.3%	38	11	28.9%	39	7	17.9%	
Long Beach Alternative High School	NA	NA	NA	NA	NA	NA	NA	NA	NA	NA	NA	NA	NA	NA	NA	NA	16	2	12.5%
Naselle High School	27	1	3.7%	22	4	18.2%	26	6	23.1%	26	6	23.1%	30	3	10.0%	19	5	26.3%	
Seaside High School	126	18	14.3%	97	14	14.4%	104	15	14.4%	88	16	18.2%	115	14	12.2%	111	27	24.3%	
Seaside Christian High School	NA	NA	NA	NA	NA	NA	NA	NA	NA	NA	NA	NA	0	0	#DIV/0!	0	0	#DIV/0!	
Sunset Christian Academy	1	1	100.0%	1	1	100.0%	1	1	100.0%	1	0	0.0%	1	1	100.0%	1	1	100.0%	
Warrenton High School	72	16	22.2%	57	20	35.1%	52	18	34.6%	55	11	20.0%	61	14	23.0%	54	15	27.8%	
Oregon Primary High Schools	453	77	17.0%	372	81	21.8%	388	85	21.9%	404	74	18.3%	426	70	16.4%	404	106	26.2%	
Washington Primary High Schools	98	12	12.2%	90	11	12.2%	97	17	17.5%	96	14	14.6%	93	9	9.7%	114	23	20.2%	
Total Primary High Schools	551	89	16.2%	462	92	19.9%	485	103	21.2%	500	88	17.6%	519	79	15.2%	518	129	24.9%	
Secondary High Schools	NA	1	NA	NA	1	NA	NA	3	NA	NA	7	NA	NA	1	0.0%	63	1	0.0%	
Other High Schools	NA	19	NA	NA	17	NA	NA	12	NA	NA	29	NA	NA	5	NA	NA	10	NA	
Other Non-Traditional Schools	NA	11	NA	NA	17	NA	NA	0	NA	NA	0	NA	NA	NA	NA	NA	0	NA	
Unknown High Schools	NA	5	NA	NA	16	NA	NA	36	NA	NA	15	NA	NA	NA	NA	NA	0	NA	
Total Enrolled	NA	125	NA	NA	143	NA	NA	154	NA	NA	139	NA	NA	85	NA	NA	140	NA	